

Kwena Heights Vétown – Design and layout

A living & learning lab for building future green communities



Kwena Heights School

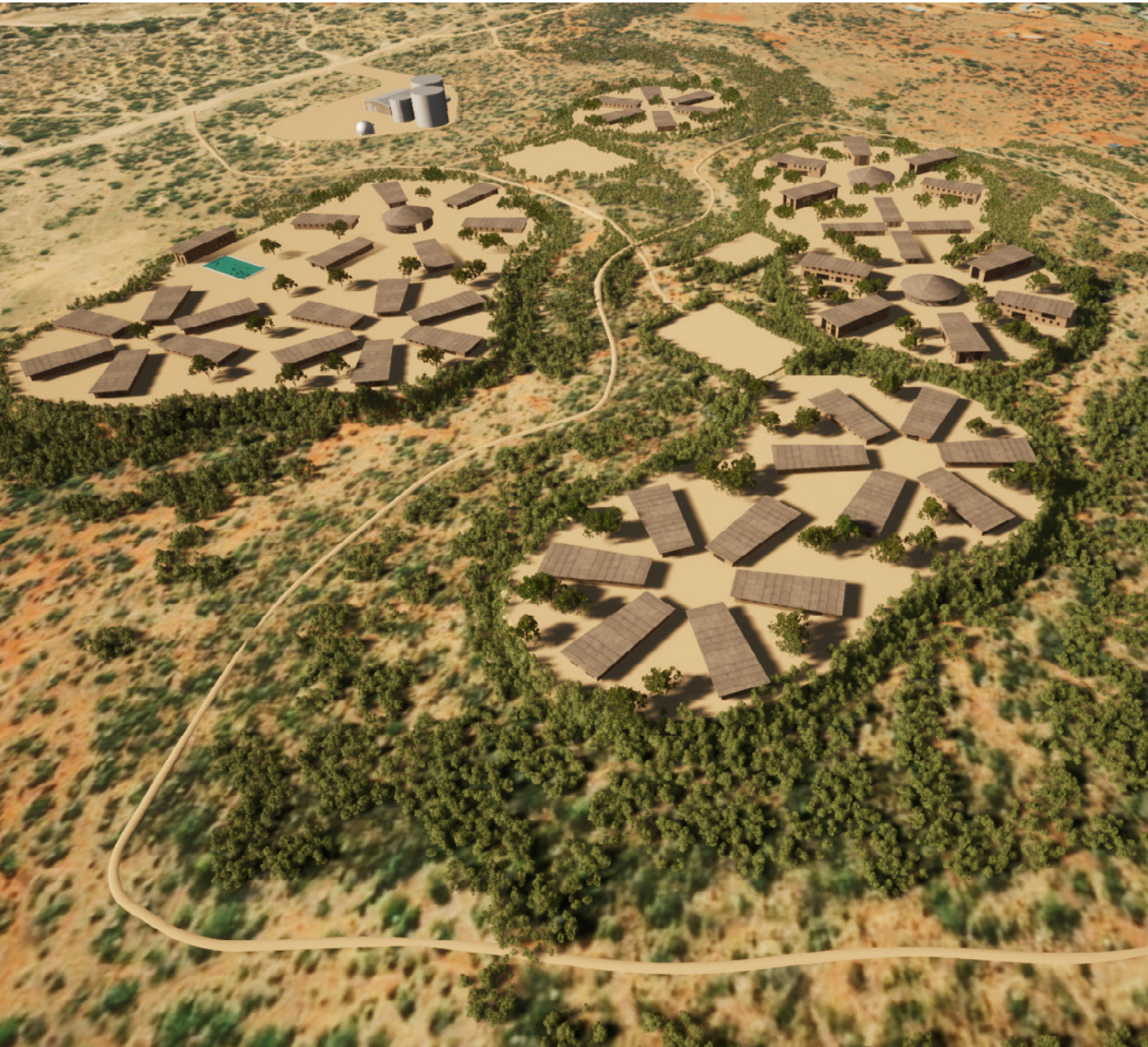


Master plan – placement of buildings and facilities

The plot is very elevated and has several slopes with rocks and precious indigenous vegetation.

The buildings and facilities of the school will be placed to create an optimal synergy between the functions of the school and the preservation of these nature areas.





Kgotla design principle

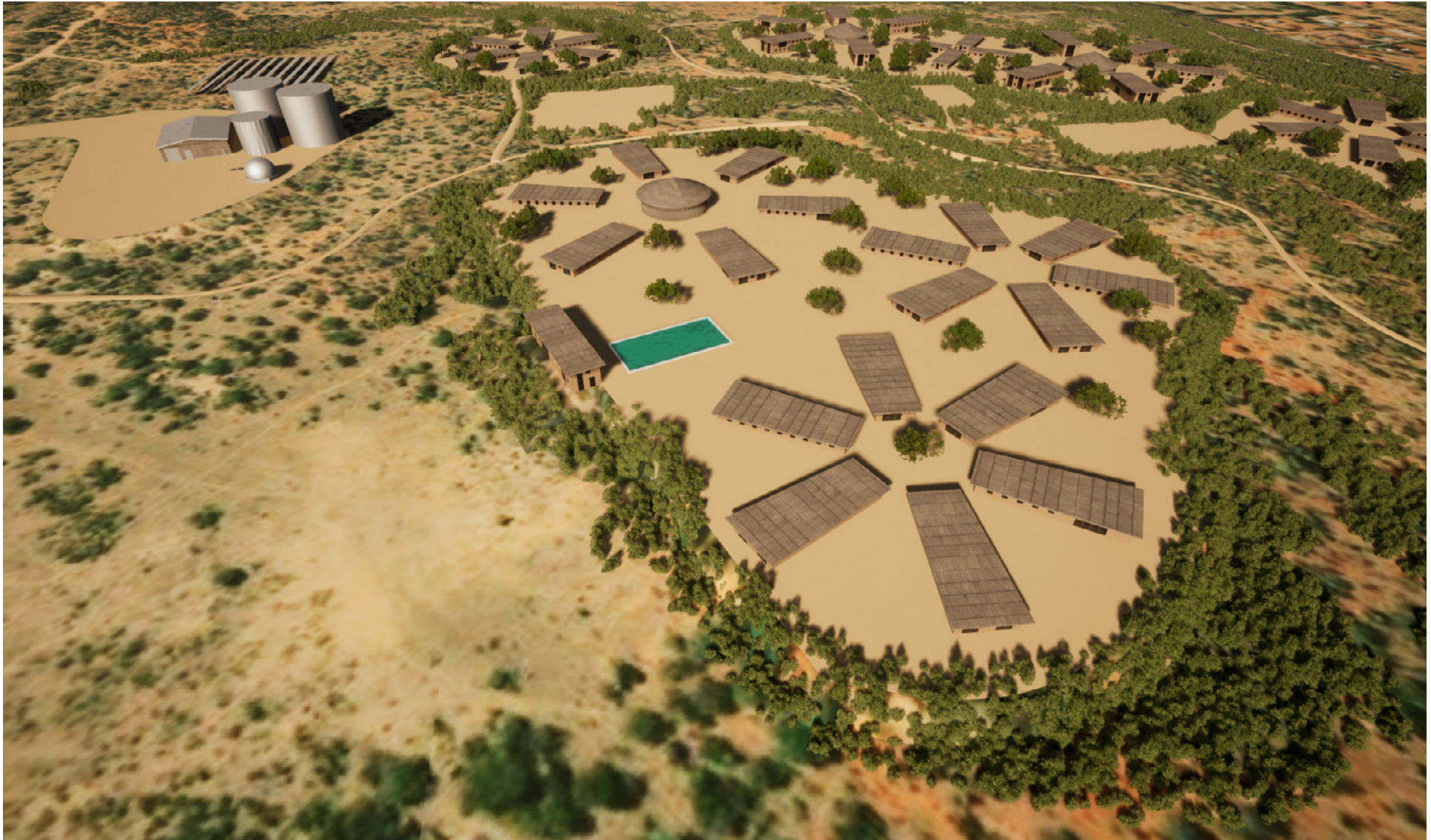
The guiding principle behind the design is the Botswana Kgotla.

Similar rectangular buildings are placed in circles resembling kgotlas – either small circles or big circles

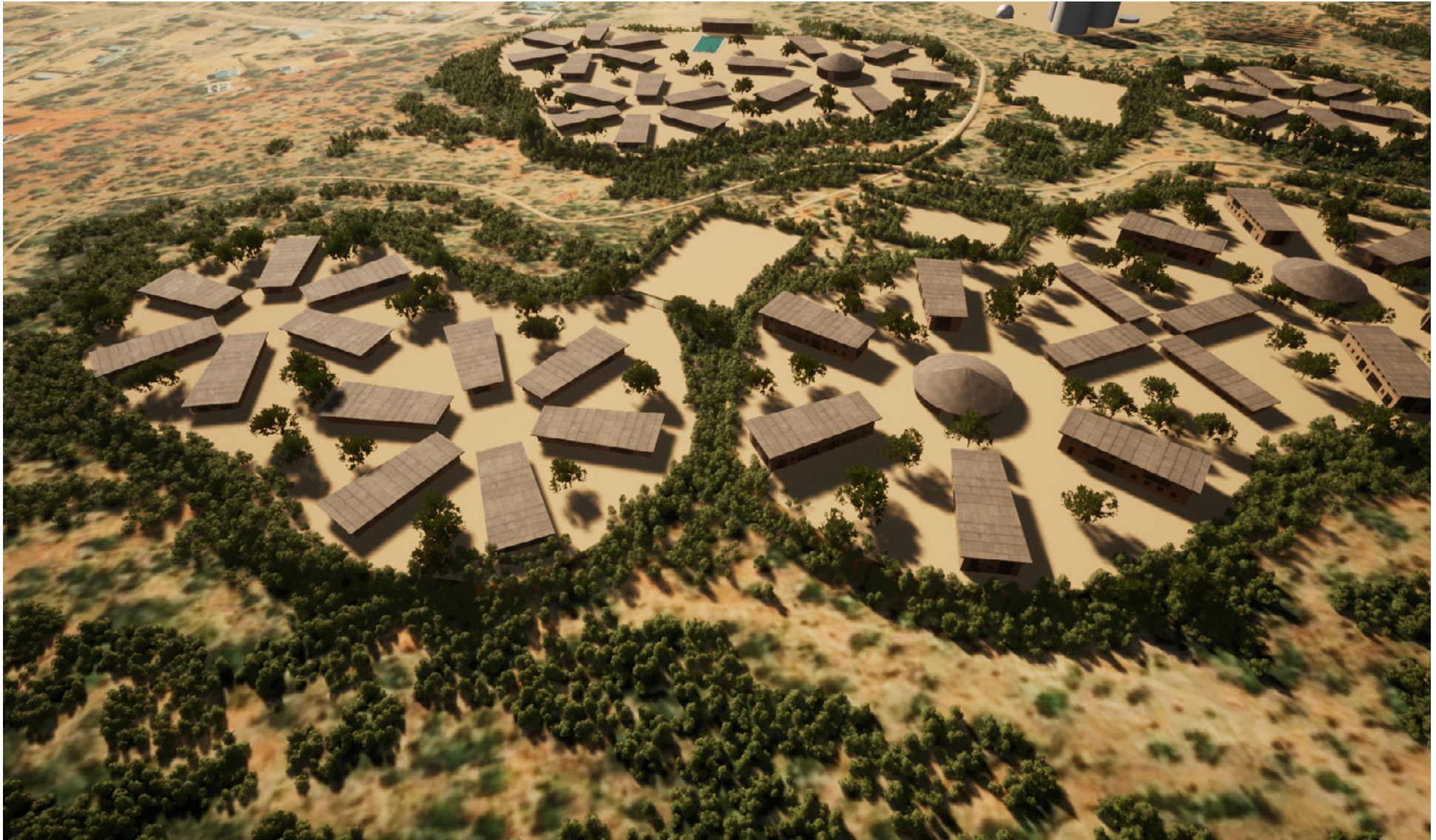
The big circles have a real Kgotla in the center as assembly places for students and teachers.



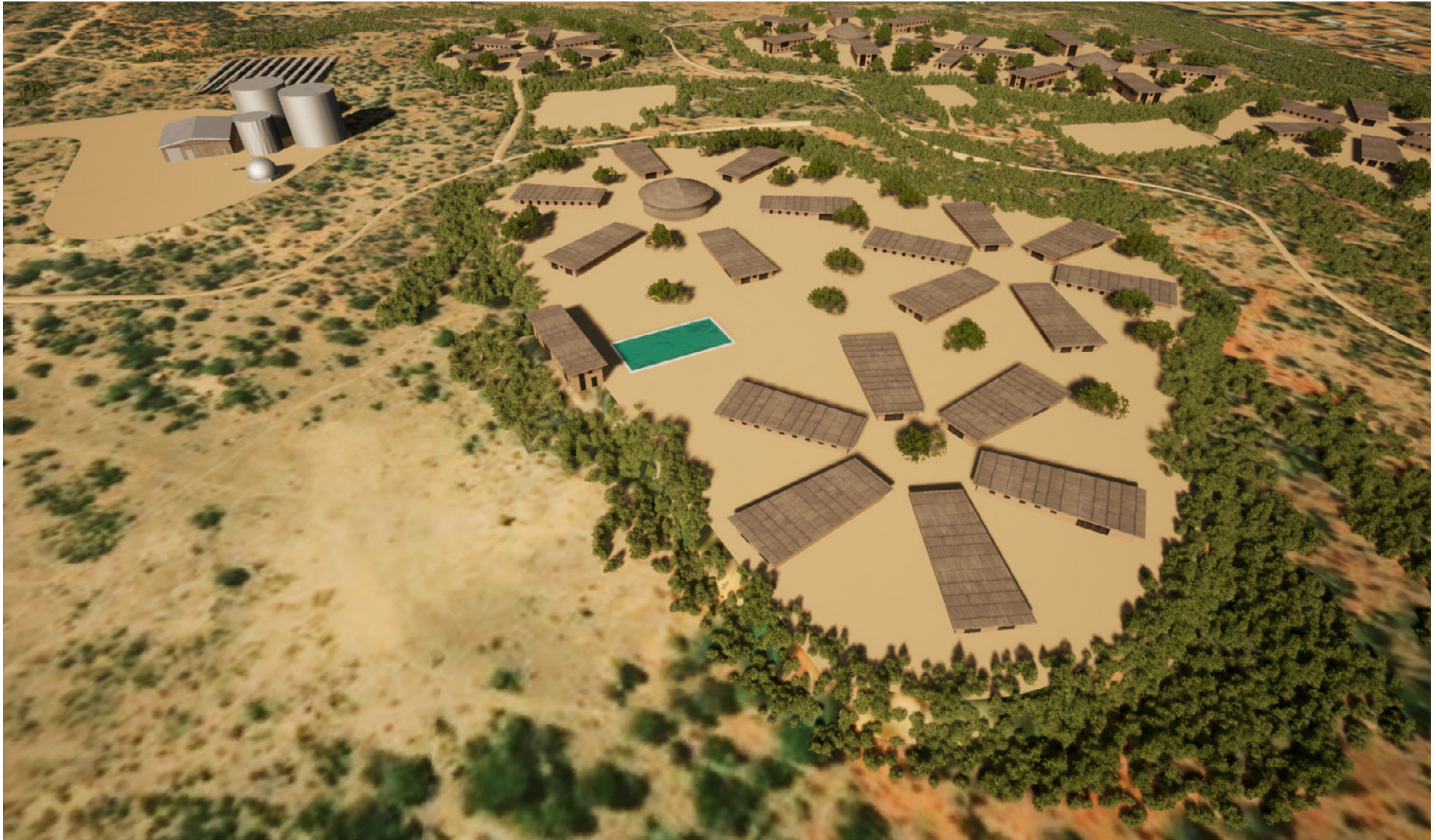
Bird-eye view from South – overlooking staff houses and boarding with preserved nature at the slope in the foreground



Bird-eye view from West overlooking school buildings and utility facilities to the left and boarding houses behind. A health clinic will be placed in the building next to the pool.



Overlooking boarding houses (to the right)
and staff houses (to the left) – school buildings in the background



Bird-eye view from West overlooking school buildings and utility facilities to the left and boarding houses behind



Overlooking boarding houses (to the right)
and staff houses (to the left) – school buildings in the background



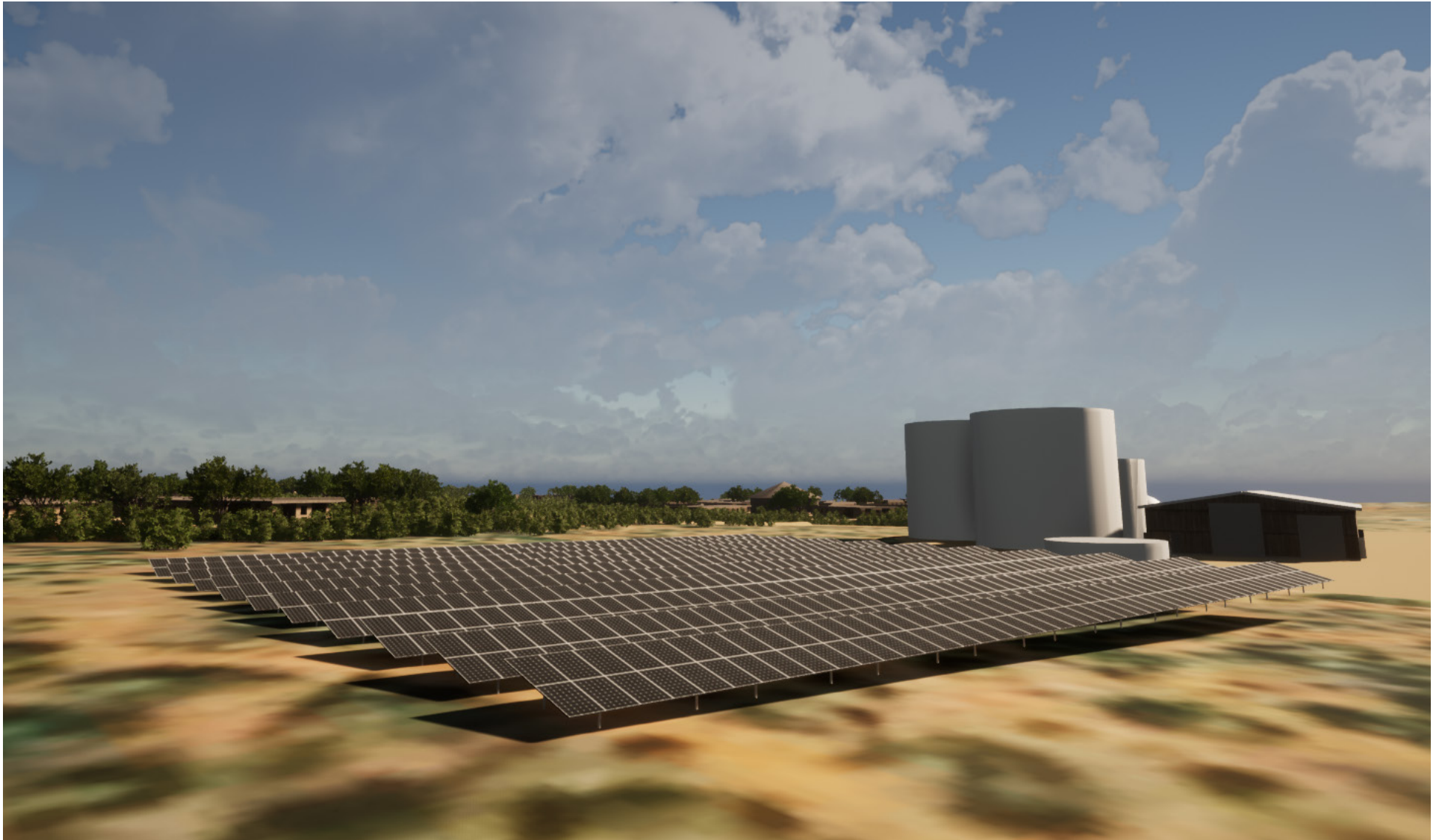
View to the 2 story boarding houses + kgotla and wind turbine in the back ground



One-story staff houses in front, two-story boarding houses behind



View from South – one-story staff houses in front to the left, two-story boarding houses to the right.

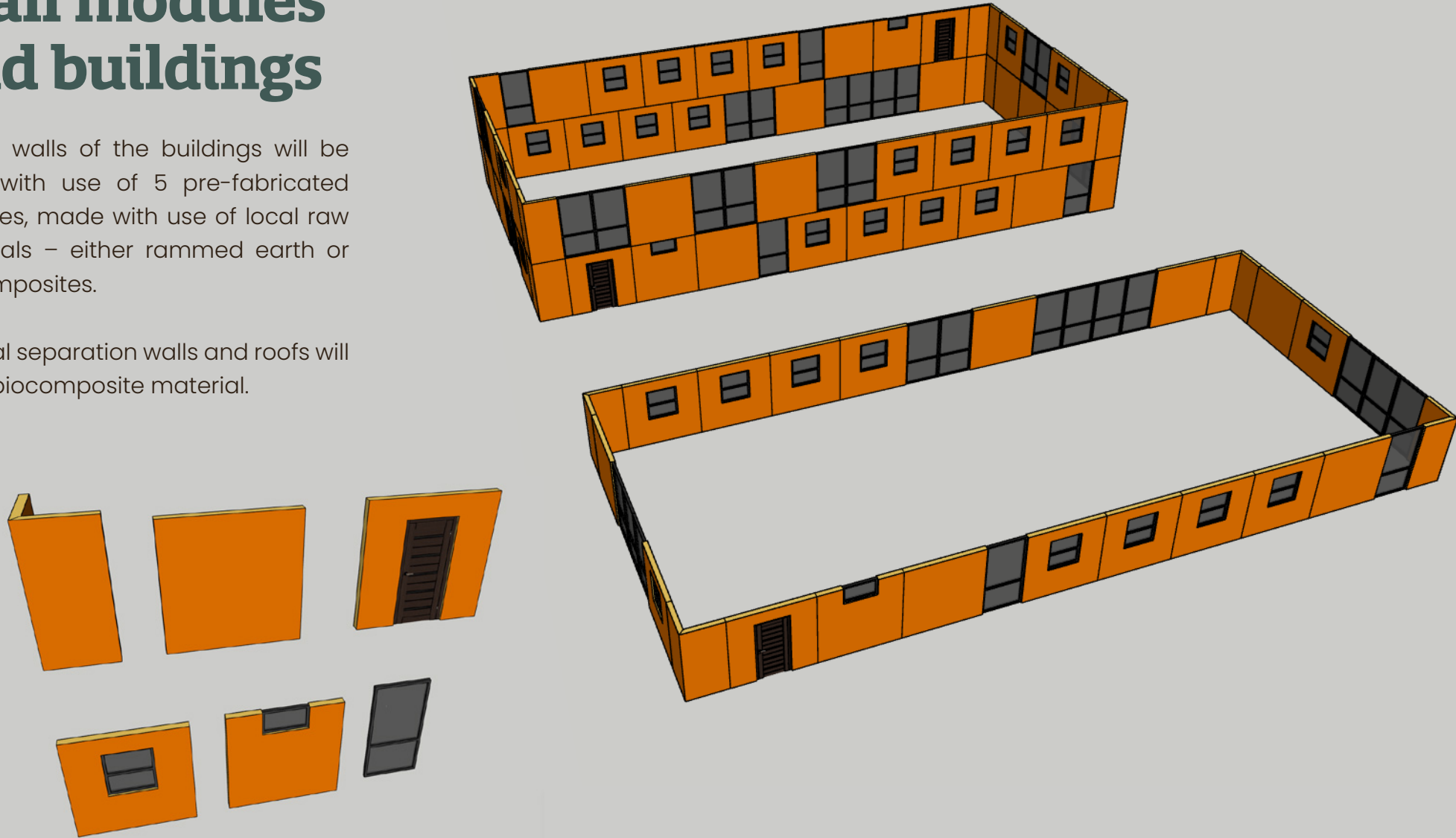


View from North East corner – with utility facilities

Wall modules and buildings

All the walls of the buildings will be erect with use of 5 pre-fabricated modules, made with use of local raw materials – either rammed earth or biocomposites.

Internal separation walls and roofs will be of biocomposite material.



Contact

Niels Mikkelsen

CEO Vétown ApS
nm@greenisland.dk
+45 81215109

Bakhwi Kragh

Director, Kwena Heights School
bk@greenisland.dk
+267 77 908 218 / +45 71708151

Further information

www.vetown.org



Kwena Heights School

